

ESSENCE

SL50 HI² FLAT EDITION

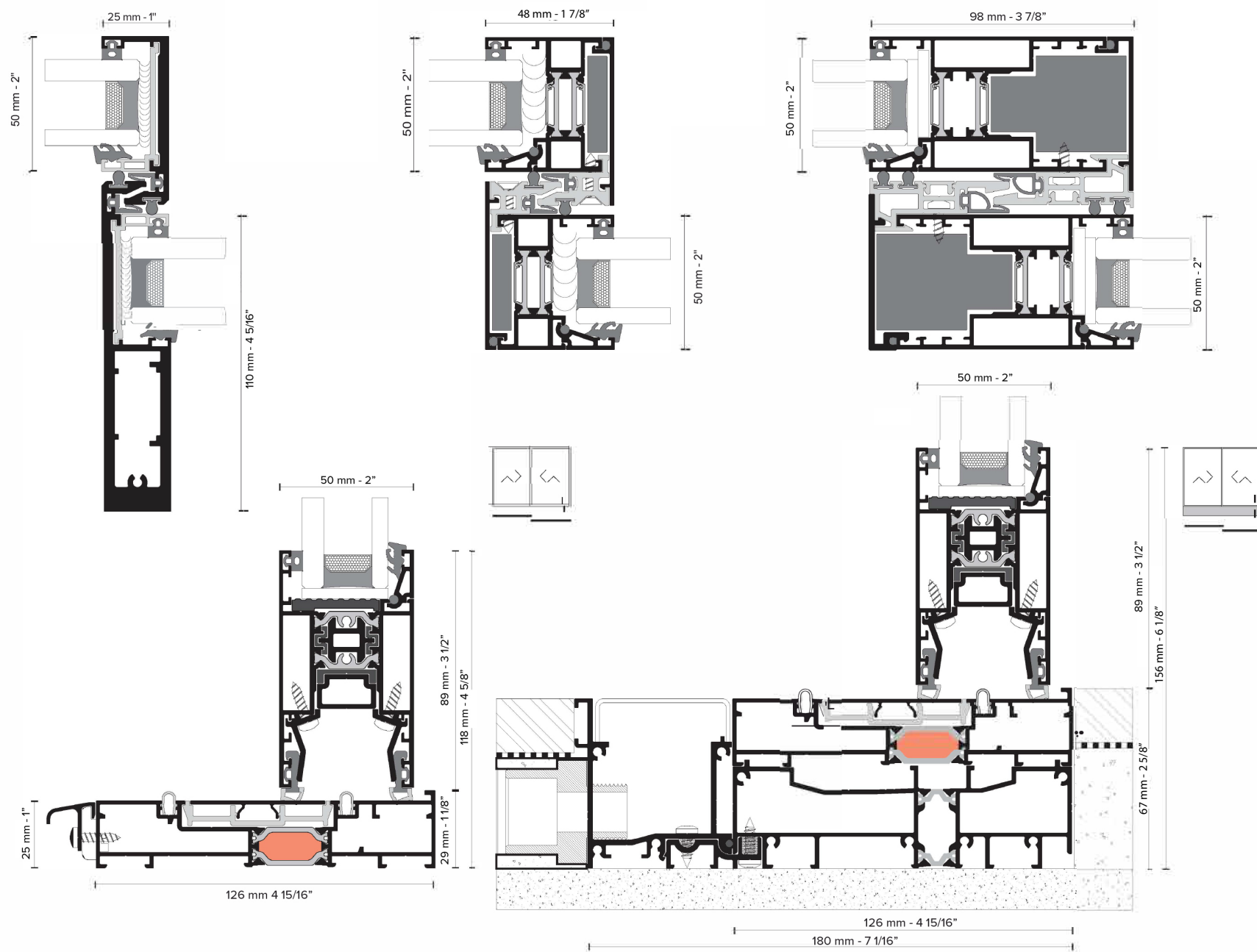


SLIDING SYSTEM

One more edition of aesthetic excellence and functional performance by LEONARDO does not come as a surprise. ESSENCE SL50 HI2 FLAT EDITION with a 25mm external and 29mm internal track and a built-in alternative will perfectly frame the limit of a comfortable interior.

ESSENCE

SL50 HI² FLAT EDITION

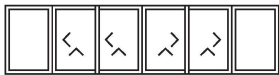


TYPOLOGIES

LIFT & SLIDE SUCCESSIVE CONSTRUCTIONS



2-Sash



6-Sash meeting stile with fixed parts



2-Sash with fixed part



2-Sash angular - Inner angle



2-Sash with flyscreen



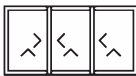
Δίφυλλο γωνιακό - Εξωτερική γωνία



2-Sash with fixed part and flyscreen



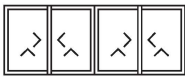
2-Sash angular - Outer angle



3-Sash



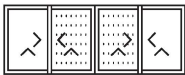
2-Sash angular with flyscreen - Outer angle



4-Sash meeting stile



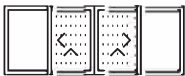
3-Sash angular - Inner angle



4-Sash meeting stile with flyscreen



3-Sash angular - Outer angle



4-Sash meeting stile with fixed parts and flyscreen

TECHNOLOGY

THERMAL INSULATION

- 1 **Insulation Bars** are set on all system's tracks
- 2 Complete filling of the middle chamber on all system's tracks using the innovative insulation technology of **ELVIAL I²**

- 3 **A Foam Insulating Profile (LDPE)** is fitted at the perimeter of the glazing zone, minimizing thermal energy loss
- 4 Co-extruded gasket on the bottom part of sashes, sealing the adjoining profile for angular constructions

ADVANCED SEASLING SYSTEM

- 1 **Q-LON** in the successive area insulating bars, even in the narrow mullion width edition
- 2 Specially designed **gaskets** that apply effectively in 2 points in the successive area
- 3 **Specially designed gaskets** and vulcanized gasket corners, guaranteeing a high level perimetrical waterproofing of the sash with the track

- 4 Elastometric **central sealants** of excellent design, which fit perfectly on the surface of the aluminium, giving a high sealing performance
- 5 Ghost glazing gaskets minimizes the visible facet and renders the gaskets practically invisible.

EXTRA FEATURES

FUNCTIONALITY

- 1 Handles for unique style
- 2 Handle damper
- 3 Lift assist that reduces the feel of weight
- 4 Options of Silent Close Damping Unit & Stop Damping Unit
- 5 Anti-Jemmy Device



COLORS

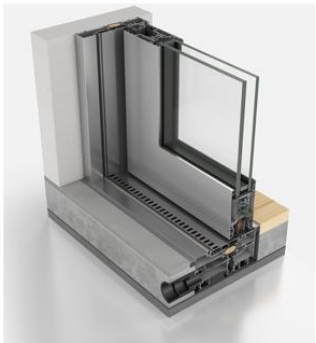
Black

Inox Satine

Natural Anodized

IDENTITY

DESIGN



PROPERTIES

Max Sash Height		3500 mm 137 13/16"
Max Sash Width		3000 mm 118 1/8"
Max Sash Weight		400 kg - 882 lb
Max Glass Thickness	 [Successive 98 mm & 48 mm]	36 mm - 1 7/16"

PERFORMANCE

ENERGY

2-Sash successive construction 6.000 x 3.500 mm	Double glazing, Ug = 1.1 W/m²K with Swisspacer Ultimate	Uw ≥ 1.42 W/m²K
----------------------------------------------------	------------------------------------------------------------	------------------------

COMFORT

Air Permeability	EN 12207	Class 4 [600Pa]
Watertightness	EN 12208	E900 [900Pa]
Resistance to Wind Load	EN 12210	B2 [800Pa]
Sound Reduction	EN 14351-1	43dB <small>Glazing</small> 44.2/15/66.2
Operating Forces	EN 13115	Class 1

System by:

elvia

